

Cabwaylingo

State Forest

CABWAYLINGO STATE FOREST is located on 8,123 heavily forested acres in the heart of southern West Virginia in Wayne County. Built in the 1930s, the forest gets its unique name from the four surrounding counties it serves: **C**ABell, **W**AYne, **L**INcoln and Min**G**O.

ACCOMMODATIONS

Vacation Cabins

- Available mid-April through late October
- 13 standard log cabins
- One modern cabin
- Stone fireplaces
- Showers
- Fully equipped kitchens
- Completely furnished for housekeeping



Two Campgrounds

Tick Ridge

- 10 rustic sites

Spruce Creek

- 11 sites
- Six with electric and water hookup
- Full shower and bathroom
- Tent pads and picnic tables
- Fireplaces
- Drinking water
- Firewood available
- Open mid-April through mid-October

McClintic Group Camp

- Will accommodate 100 people
- Fully equipped
- Great for church retreats, family reunions and civic groups
- Two buildings sleep 50 each
- Available for rentals May to mid-September



RESERVATIONS

Vacation Cabins and McClintic Group Camp

Reservations may be made by writing or calling Cabwaylingo State Forest directly or by dialing 1-800 CALL WVA and asking for Cabwaylingo State Forest. This toll-free line may be used anywhere in the continental United States or any Canadian province in the Eastern time zone.

When making cabin reservations for four nights or more, a deposit of one-half the rental fee is required with the balance due upon arrival; the full rental fee is required for reservations of three nights or less. Reservations made by telephone have 10 days to make payment. Reservations made less than 10 days before arrival, as available, are accommodated with a method of guarantee provided at the time the reservation is made.

Two or more nights rental is required. During peak season, some cabin units are weekly rentals only.

In case of cancellations, deposits will be returned less a \$20 handling fee, if notice is given at least 30 days in advance.

Personal checks, money order and major credit cards (Visa, MasterCard, Discover, American Express and Diners Club) are accepted.

Reservations may be made up to a year in advance (from the first day in the month) and are recommended at all times.

NOTE: Policies, rates and fees are subject to change.



HISTORY OF THE FOREST

CABWAYLINGO STATE FOREST is steeped in the history of the Civilian Conservation Corps (CCC) of the 1930s and 1940s. The CCC camps, including the one at Cabwaylingo, were established to rebuild forested acres, which in turn marks the beginnings of the West Virginia State Park System. During the 1930s, the hard working members of the CCC at Cabwaylingo built log cabins with stone fireplaces, the superintendent's residence, picnic areas, hiking trails and a fire tower. Many of these structures still exist and are in use today. Examples of their labor are the kitchen area of the group camp and Tick Ridge Fire Tower, built in 1935. Although not in use, it stands today as one of less than a dozen fire towers remaining in the state.



RECREATIONAL FACILITIES

Swimming

- Located near McClintic Group Camp
- Bathhouse
- Wading pool for children
- Open Memorial Day until Labor Day

Picnicking

- Modern and rustic shelters
- Playground equipment nearby
- Conveniently located toilet facilities
- Reservable shelters

Game Courts

- Basketball court
- Game equipment for rental, volleyball and horseshoes

Hiking

- Scenic trails
- Vary in length – one to three miles
- Map and trail guides available at the park office and online

Fishing

- Twelvepole Creek – trout stocked seasonally
- Purchase required license at the park office or online at www.wvfish.com

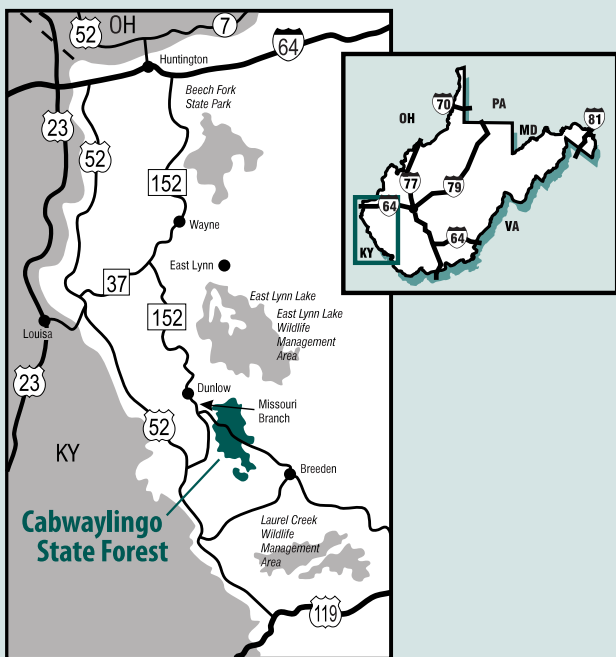
Hunting

- Permitted during respective hunting seasons
- Purchase required license at the park office or online at www.wvhunt.com



NEARBY ATTRACTIONS

- Beech Fork Marina (Army Corps of Engineers)
- Beech Fork State Park
- Beech Fork Wildlife Management Area
- Big Ugly Wildlife Management Area
- Blenko Glass Factory
- Chief Logan Lodge and Conference Center
- Chief Logan State Park
- East Lynn Lake
- Harris Riverfront Park
- Huntington Museum of Art
- Laurel Lake Wildlife Management Area
- Marshall University



LOCATION

Located in Wayne County in southwestern West Virginia, Cabwaylingo State Forest is found midway between Huntington and Williamson. The forest may be reached by following U.S. Route 152 for about 42 miles south of Huntington and turning off at Missouri Branch.



Route 1, Box 85
 Dunlow, West Virginia 25511
 304-385-4255
www.cabwaylingo.com

A multiple-use facility managed by the Parks and Recreation and the Wildlife Resources sections of the Division of Natural Resources, and the Division of Forestry.

West Virginia Division of Natural Resources, Capitol Complex, Charleston, WV 25305
**STATEMENT OF POLICY REGARDING THE EQUAL OPPORTUNITY
 TO USE FACILITIES AND PARTICIPATE IN PROGRAMS**

Visitors are responsible for observing park rules and regulations.

"It is the policy of the West Virginia Division of Natural Resources to provide its facilities, accommodations, services and programs to all persons without regard to gender, race, color, age, religion, national origin or disability. Proper licenses, registration and compliance with official rules and regulations are the only sources of restrictions for facility use or program participation."

"The West Virginia Division of Natural Resources is an equal opportunity employer."

Information provided in this brochure is current as of design date, but subject to change thereafter.